

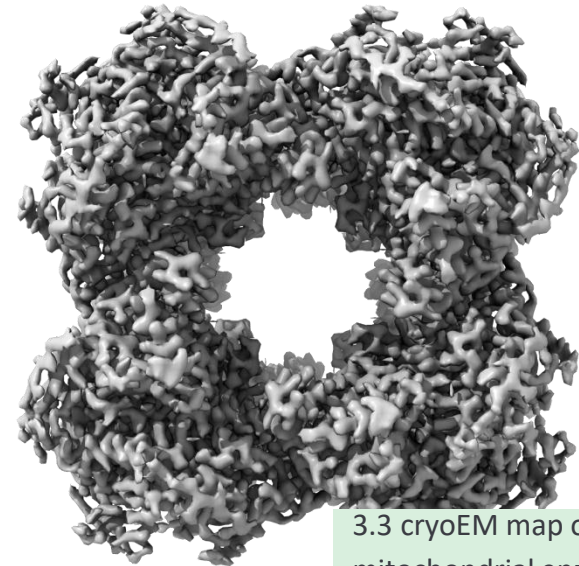
## Challenge

Improve image reconstruction in 3D cryo-electron microscopy (cryoEM) for molecular and nano-scale imaging.

## NUMERICAL ANALYSIS AND FAST ITERATIVE SOLVER FOR 3D INVERSE PROBLEMS

## Goals

- Analyze basic models in single particle analysis cryoEM.
- Propose and build efficient method for inner reconstruction in single particle analysis.



3.3 cryoEM map of human mitochondrial enzyme

## Benefits

The research opens up new avenues for application of iterative methods in single particle analysis cryo-EM.